



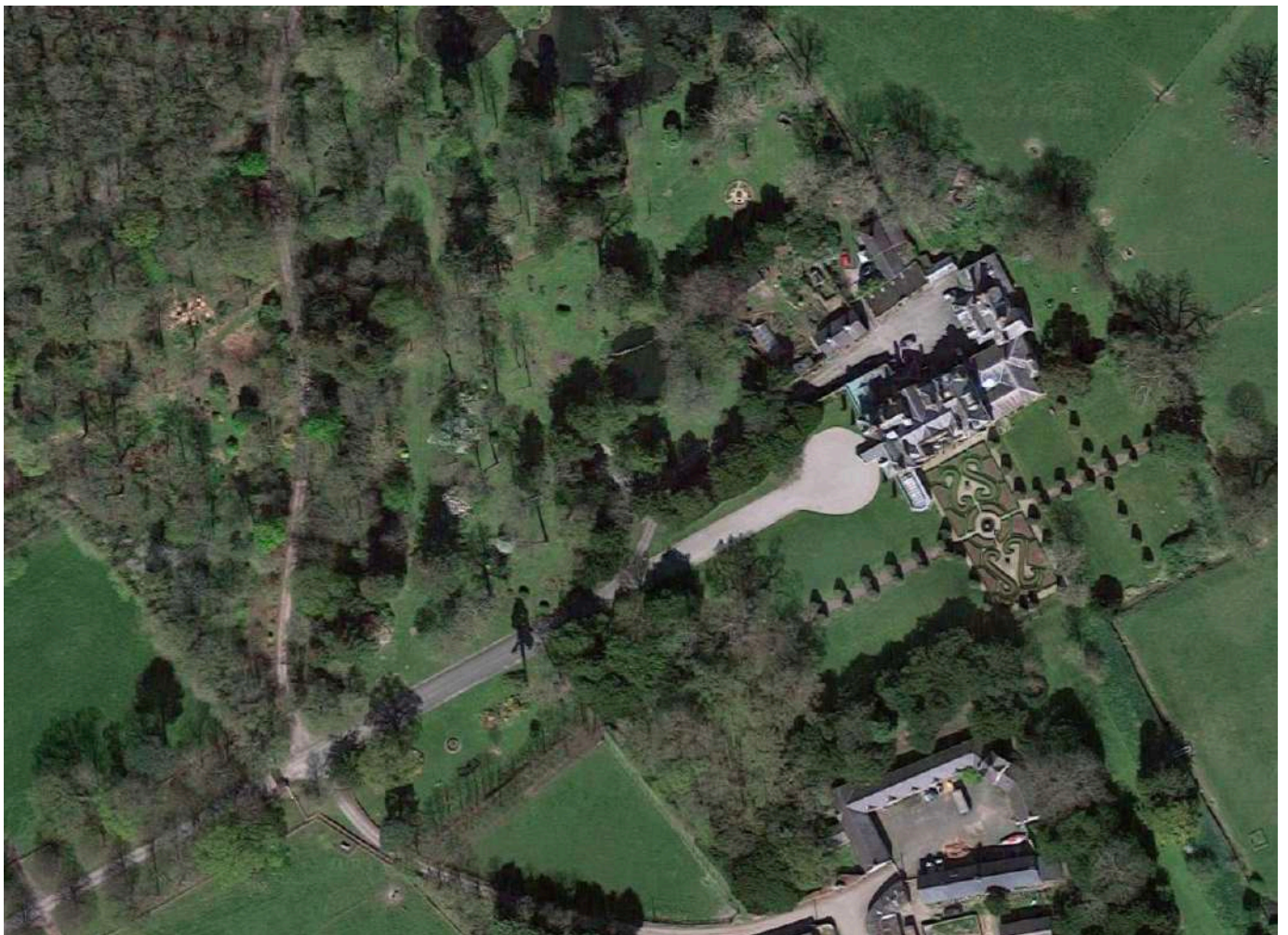
BODRHYDDAN
— HALL —

Access Guide



Introduction

At Bodrhyddan, we welcome all visitors and strive to make everyone's visit as comfortable and enjoyable as possible. This Access Guide provides a general overview of accessibility at Bodrhyddan Hall. Here you will find photos of stairs, ramps, floors, and more, so you can pre-plan your visit to Bodrhyddan Hall in as much detail as possible. Please get in touch if you require any further information about specific access or need advice on planning your visit. For accessibility inquiries, please contact: info@bodrhyddan.co.uk



Accessibility at a glance

Complimentary access to house and ground for carers

Assistance dogs welcome

Disabled access parking available

There is ramp access into Bodrhyddan Hall

There is level access to;

The visitor car park

The gardens around the house

The lawns and topiary

There is sloped / uneven access (can be steep) to:

The upper lawns and topiary

The parterre and fountain

The avenue

Inside the house

There are two floors

There is no step free access to the White Drawing Room

There is step free access to our tea rooms

We are currently exploring options to make our toilets more accessible.

Visual

Many rooms inside the house have dim / low lighting

Getting to Bodrhyddan Hall

By Road

The sat nav address (LL18 5SB) may bring you to the Home Farm area. If so, continue along the road until the house comes into view. On road signage is visible approx 100m from the entrance.

Parking

The visitor parking area has dedicated spaces for Blue Badge holders. Please drive towards the house and park just before the turning circle (this is signposted). The car park is open air, with a tarmac surface and free to visitors.

By Rail

Regular trains run from London, Manchester, Holyhead and Cardiff to Rhyl or Prestatyn train stations. You will need to take a taxi or bus from there to get to Bodrhyddan from here.

By Bus

The 35/36 circular route has a dedicated stop at Bodrhyddan Hall. This is a historic stop that is not frequently used so you may need to remind the driver. After disembarking, simply follow the roadside signs to the Hall.

Local Taxi Services

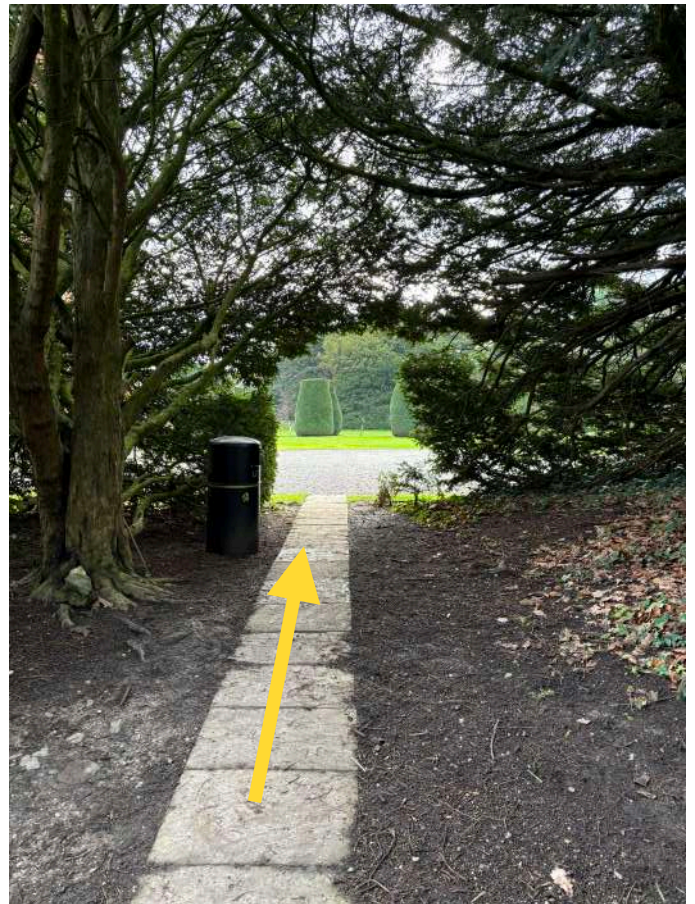
Busy Bees Taxi's - 01745 334455

A&J Taxis - 01745 344444

On Arrival

Visitor Parking Area

Visitors are asked to park either side of the drive before the turning circle. Please avoid parking on the grass. You will need to check in at reception on arrival. This is located directly ahead of you through the front door. A ramp is available on request. The gravel in front of house may be difficult for wheelchair users so there is an alternative route signposted. This route is approximately 100 metres.



Tickets

We strongly advise pre-booking admission to best accommodate your needs. Carers accompanying disabled visitors receive free entry.

Bench seating is available near the front door if you need to take a seat.

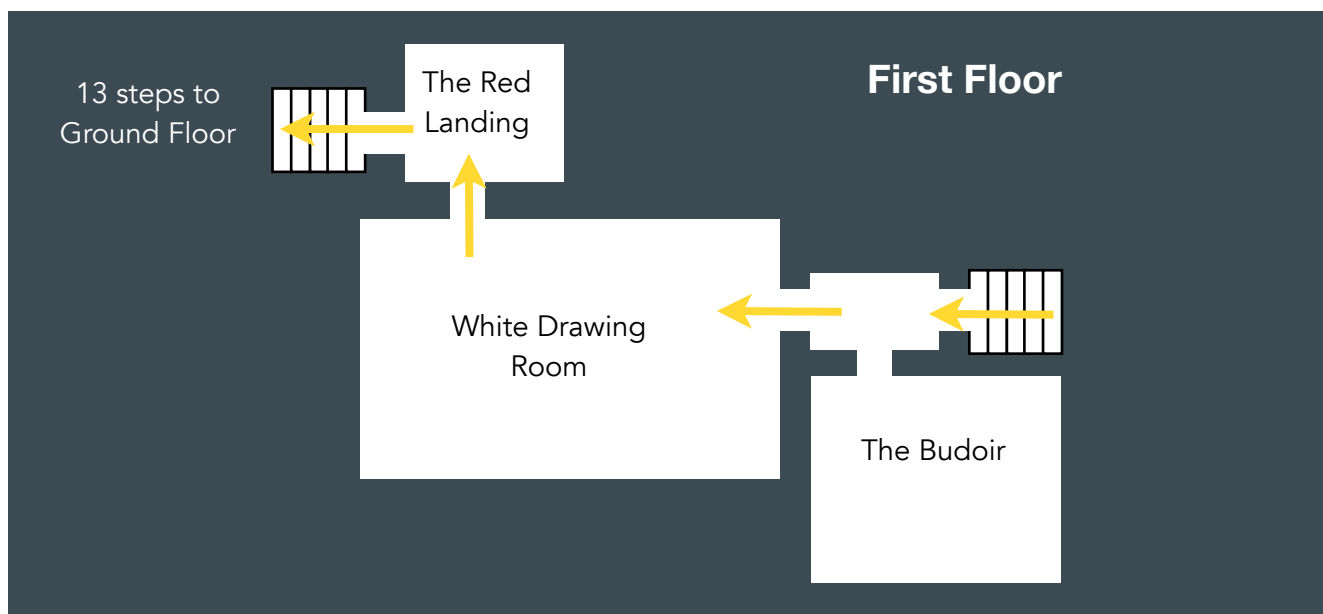
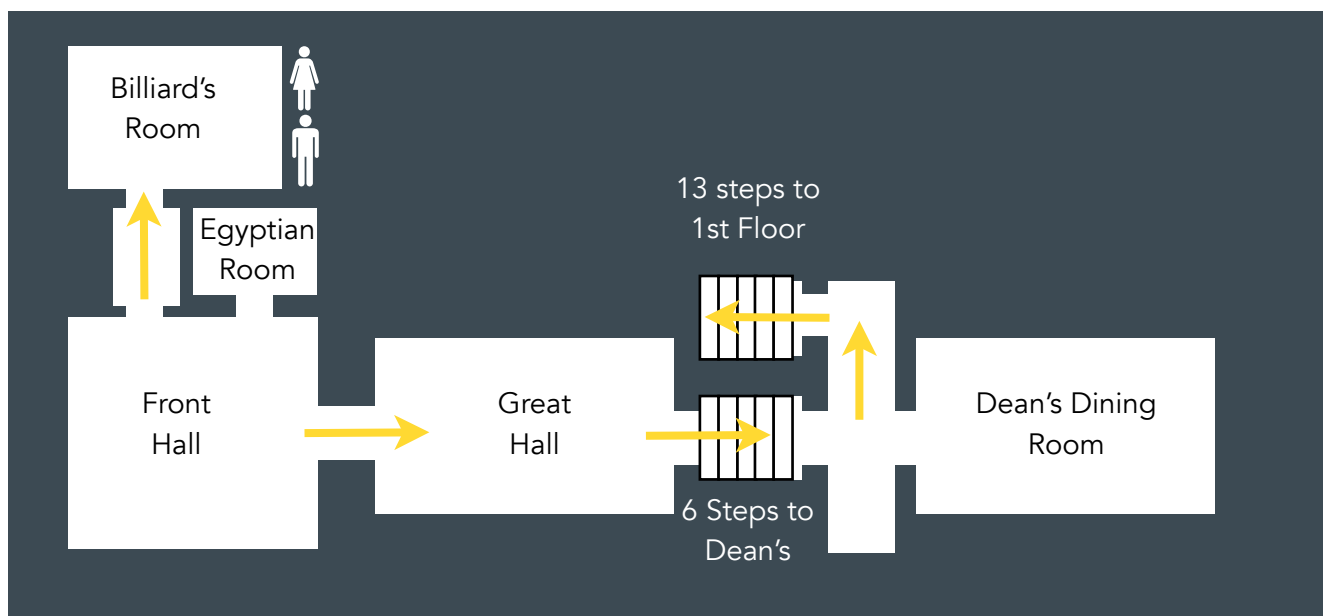
First Aiders

There are first aid trained staff on site at all times. If you require first aid, please let a staff member know and they can arrange a first aider to help you as soon as possible.

At a Glance: Inside the House

For conservation reasons, many of the rooms operate in dim / low light levels.

The floor surface is mainly carpets / rugs with some wooden flooring
The Red Landing has red carpeted floors which can cause visual disorientation or sensory sensitivity for some visitors.



INSIDE THE HOUSE

House entrances and exits

There are foldable ramps at the main entrance of the house allowing access for wheelchair and mobility scooter users.

Safety and emergency evacuation procedures

For safety reasons, we can only allow two wheelchairs or mobility aids inside the house at the same time and on busy days there may be some waiting during your visit.

We have an emergency evacuation procedure in place for wheelchair users and those with problems navigating stairs when inside the house.

Seated areas

Seating is available throughout the house, please ask a member of staff to point out the appropriate chairs if needed.

Stairs within the house

The Dean's Dining Room is accessible using the shallow staircase from the Great Hall corridor.

There are 6 steps between the two levels

The height of the steps is 10cm

There is a handrail on both sides.



The White Drawing Room is accessible using the Budoir Staircase.

There are 13 steps between the ground floor and first floor

The height of the steps is 16cm

There is a handrail on both sides

The stairs' surface is carpet



There is another staircase from the Red Landing that connects The White Drawing Room and the Great Hall.

There are 19 steps between the ground floor and the first floor

The height of the steps is 14cm

There is a handrail on both sides

The stairs' surface is red carpet



The Grounds

There are several gravel / chipped stone paths to navigate the grounds. The surface may not be suitable for wheelchair users, pushchairs and mobility scooters.

Steep Banks

You will find steep and uneven grassed areas around the lawns and parterre. We do not advise attempting to use these as access ways.

The Summer House

The Summer House is located at the bottom of Pleasance
There is a set of cobbled stairs from the gardens to the Summer House
There is bench seating around the ponds to view the Summer House
There are some uneven surfaces and 22 steps to the top.

The Parterre

The parterre is located to the South side of the house, to the right of the front door
There is step free access
The surface is a mixture of grass and gravel
Stone steps from the parterre lead to upper lawns and avenue

Assistance Dogs

All recognised assistance dogs are welcome at Bodrhyddan Hall, within the grounds and house. Dog bowls can be found placed around the gardens. For a bowl of water, please ask a member of staff at reception or in the Billiard's Room.

Non-assistance dogs may also visit the grounds.

Blind & Partially Sighted Visitors

For conservation reasons, many of the rooms inside Bodrhyddan Hall have low lighting. Please allow sufficient time for your eyes to adjust particularly when using the stairs. Please be aware that many of the rooms inside the house are furnished with red carpet, and use low red and gold rope barriers. Some visitors may find this a visually disorientating interior and have difficulty discerning distance.

Deaf or hard of hearing visitors

We do not have any staff trained in British Sign Language.

Food and dietary requirements

Please let our staff know if you have any dietary requirements and they will do their best to accommodate your needs.

There are vegan and gluten free options at the Billiard Room. Please inform staff of any allergies.

Events

Bodrhuddan Hall hosts a number of events throughout the year. These take place on a number of different sites around the estate. Ahead of your visit, please contact us so we can best keep you informed of any accessibility issues.

Enquiries and contact

If you have any queries, please do not hesitate to contact us at info@bodrhuddan.co.uk

General details

Telephone - 01745 590155

Comments and feedback

info@bodrhuddan.co.uk

Bodrhuddan Hall, Dyserth Road, Rhuddlan, LL18 5SB

Information last updated January 2024



BODRHYDDAN
— HALL —